



# TITAN

 **ORIENT**CERAMICA

# ABOUT TITAN

SOMETHING OF GREAT STRENGTH

- EXTREMELY IMPORTANT, LARGE AND POWERFUL - ONE OF ITS KIND
- THE WORD TITAN IS DERIVED FROM GREEK MYTHOLOGY MEANING 'FAMILY OF GIANTS' WHICH DEEPLY RESONATES WITH THE NEW 100X100 SIZE



ORIENT

## ABOUT

ORIENT CERAMICA IS A PART OF ORIENT GROUP OF COMPANIES WHICH TRAILS A LEGACY OF 60 YEARS OF INNOVATION, QUALITY, AND AN EXTENSIVE JOURNEY TO EXCELLENCE. WE HAVE ESTABLISHED A STATE-OF-THE-ART ITALIAN PRODUCTION FACILITY TO INTRODUCE EUROPEAN STANDARD GRÉS PORCELAIN TILES FOR THE PAKISTANI MARKET. ORIENT CERAMICA IS A PREMIUM BRAND THAT HAS ESTABLISHED ITSELF AS THE MOST TRUSTED PROVIDER OF AN AFFLUENT LIFESTYLE IN PAKISTAN. OUR GRÉS PORCELAIN TILES ARE WELCOMED IN A BROAD RANGE OF INTERIOR SETTINGS DUE TO THEIR UNIQUE VERSATILITY IN APPLICATION. AVAILABLE IN A WIDE RANGE OF SIZES, COLORS, TEXTURES, AND FINISHES TO BEAUTIFY MUNDANE AND ORDINARY SPACES AND TURN THEM INTO EXTRAORDINARY INTERIORS.



## WHY ORIENT CERAMICA?

ORIENT CERAMICA HAS ESTABLISHED A STATE-OF-THE-ART ITALIAN MANUFACTURING FACILITY AND INTRODUCED GRÉS PORCELAIN TILES FIRED IN PAKISTAN'S MOST ADVANCED MAESTRO KILN. OUR DESIGNS ARE PRINTED WITH MULTI-RESOLUTION TECHNOLOGY TO GIVE YOU OUR DESIGNS. CUSTOMERS WITH A NATURAL FINISH.

OUR GRÉS PORCELAIN TILES ARE CUT USING SQUADRA DRY TECHNOLOGY TO ENSURE EACH TILE IS THE SAME SIZE. IT ALSO INCORPORATES SUPERSHINE, A HIGH-GLOSS FINISHING TECHNOLOGY.



**TECHNOLOGIES**

---

OUR UNIQUE QUALITY FEATURES THAT MAKE US DIFFERENT FROM OTHERS AND HELP US MEET INTERNATIONAL STANDARDS.



**GRÈS**  
PORCELAIN

THE ULTIMATE TILE BODY, GUARANTEES DURABILITY AND STRONG FOUNDATION.



**MAESTRO**  
KILN TECHNOLOGY

ENSURES EDGE TO EDGE HOMOGENOUS TEMPERATURE.



**MULTI**  
RESOLUTION  
PRINTING

OPTIMIZED COLOR PROCESSING, LARGER COLOR PALETTE.



**SQUADRA**  
DRY TECHNOLOGY

PROPORTIONATE DIMENSIONS, ABSORBS AND RETAINS MOISTURE.



**PURO**  
ANTIBACTERIAL

ELIMINATES UPTO 99.9% OF BACTERIA AND OTHER HARMFUL MICROORGANISMS.



**SURFACES / FINISHES**

---



PRODUCTS







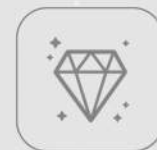
## MARMI LEVANTO

MARMI LEVANTO MIX DARK  
DIAMOND SHINE  
30X120

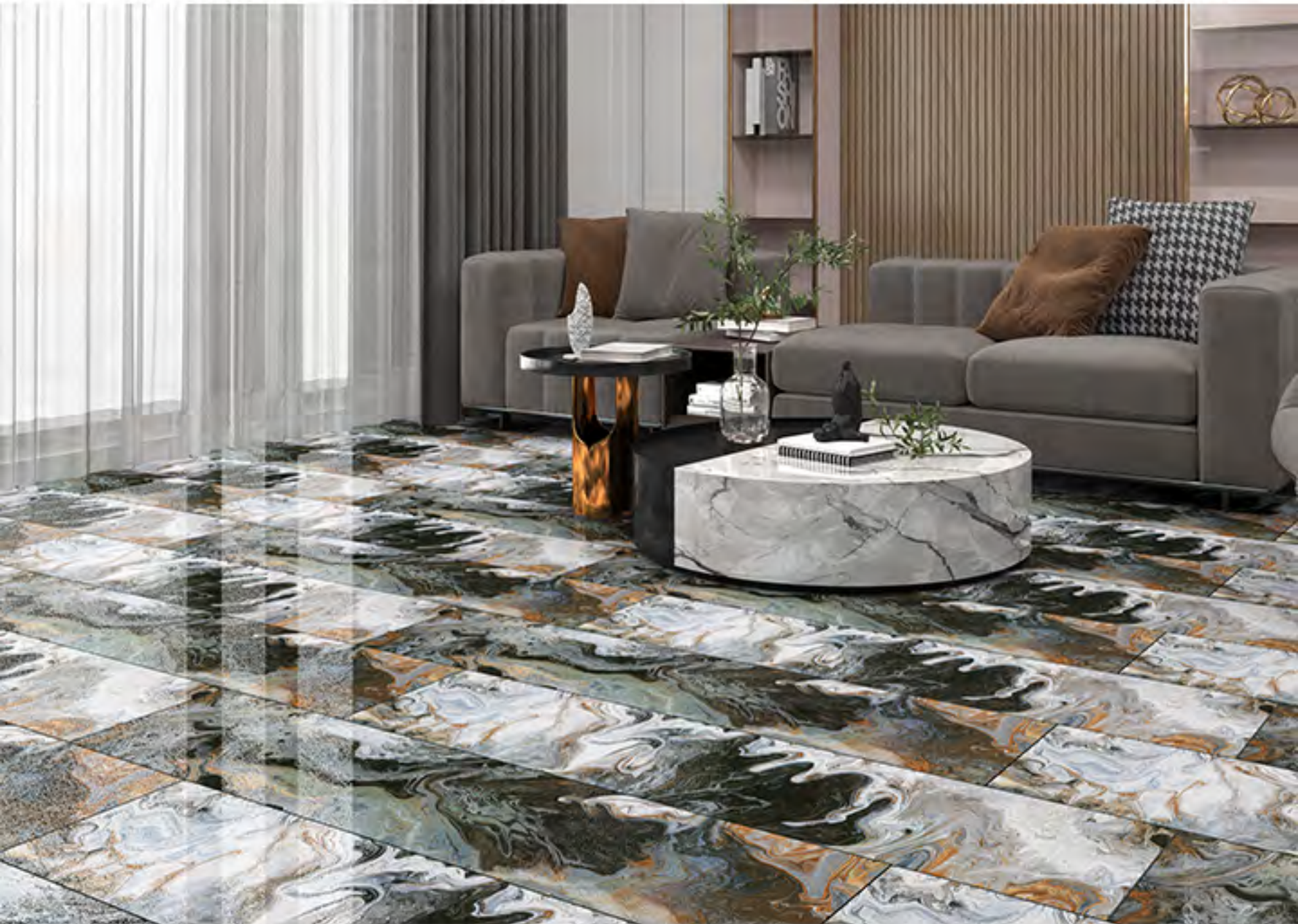
AVAILABLE FACES



SURFACE



DIAMOND SHINE

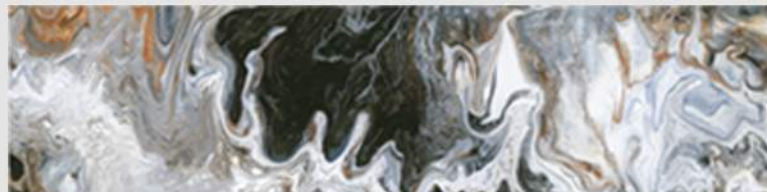




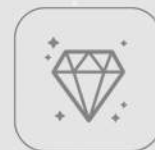
## MARMI KAZAN

MARMI KAZAN MIX DARK  
DIAMOND SHINE  
30X120

AVAILABLE FACES



SURFACE



DIAMOND SHINE





## DECORO DIVERGENT

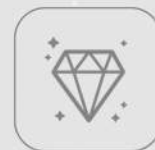
---

DECORO DIVERGENT MIX DARK  
DIAMOND SHINE  
30X120

AVAILABLE FACES



SURFACE



DIAMOND SHINE





## MARMI ALDO

MARMI ALDO MIX DARK  
DIAMOND SHINE  
30X120

AVAILABLE FACES



SURFACE



DIAMOND SHINE





# MARMI OSCAR

SURFACE



SUPERMATTE



## AVAILABLE FACES



MARMI OSCAR SUPERMATTE 30X120 BEIGE LIGHT

# DECORO OSCAR

TEXTURE

SURFACE



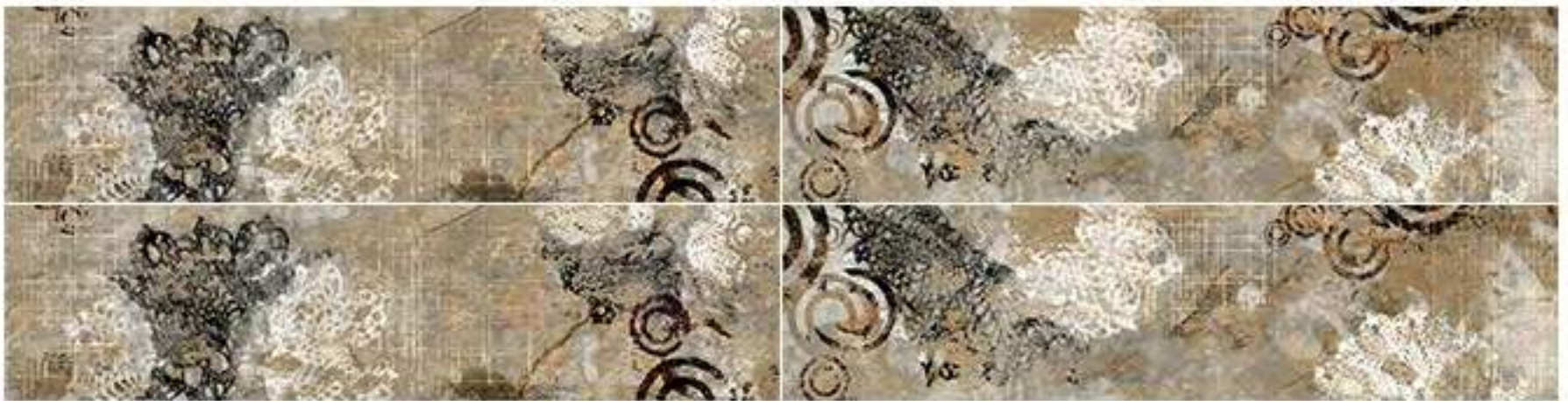
LUSTER



SUPERMATTE



## AVAILABLE FACES



DECORO OSCAR SUPERMATTE LUSTER 30X120 MIX DARK

# MARMI OSCAR

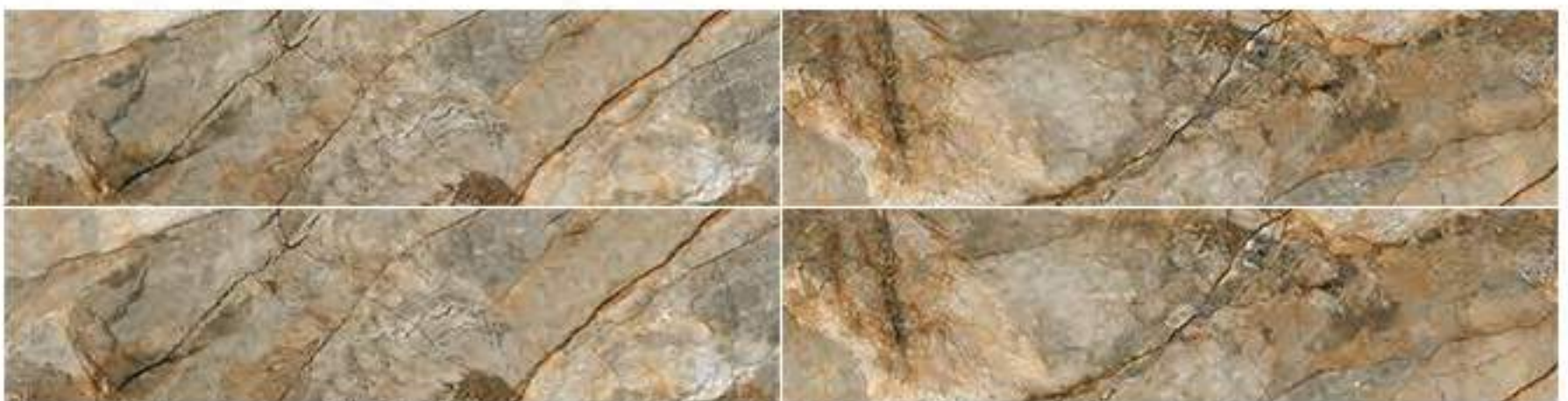
SURFACE



SUPERMATTE



## AVAILABLE FACES



MARMI OSCAR SUPERMATTE 30X120 BROWN DARK



# SKYLINE SEOUL

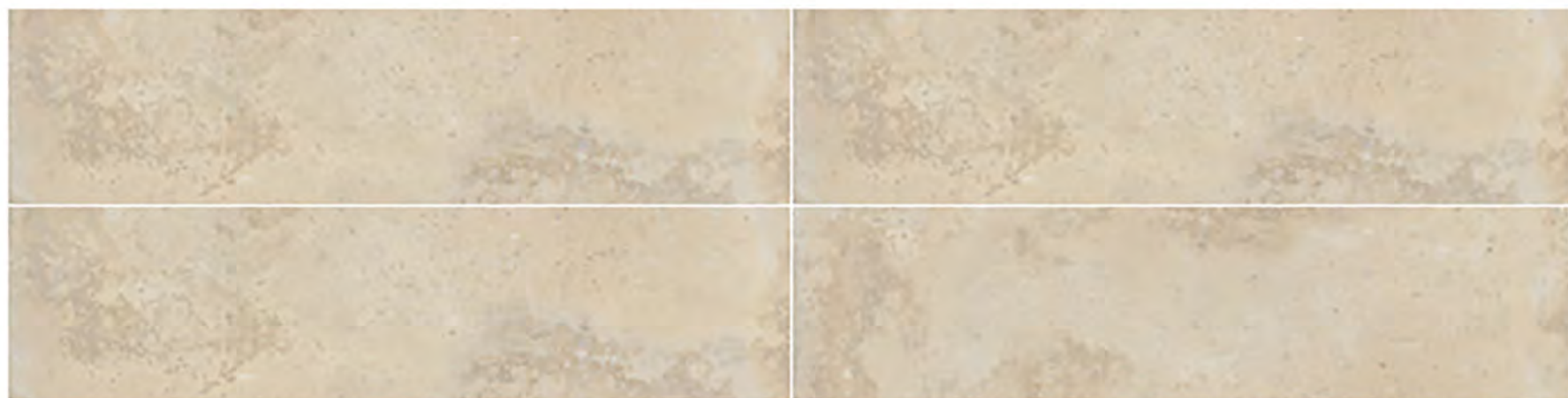


SURFACE



VELVET MATTE

## AVAILABLE FACES



SKYLINE SEOUL VELVET ROCKER LUSTER 300X1200 BEIGE LIGHT

# DECORO SEOUL



TEXTURE

SURFACE



LUSTRE



VELVET MATTE



ROCKER EFFECT

## AVAILABLE FACES



DECORO SEOUL VELVET ROCKER LUSTER 300X1200 BEIGE LIGHT

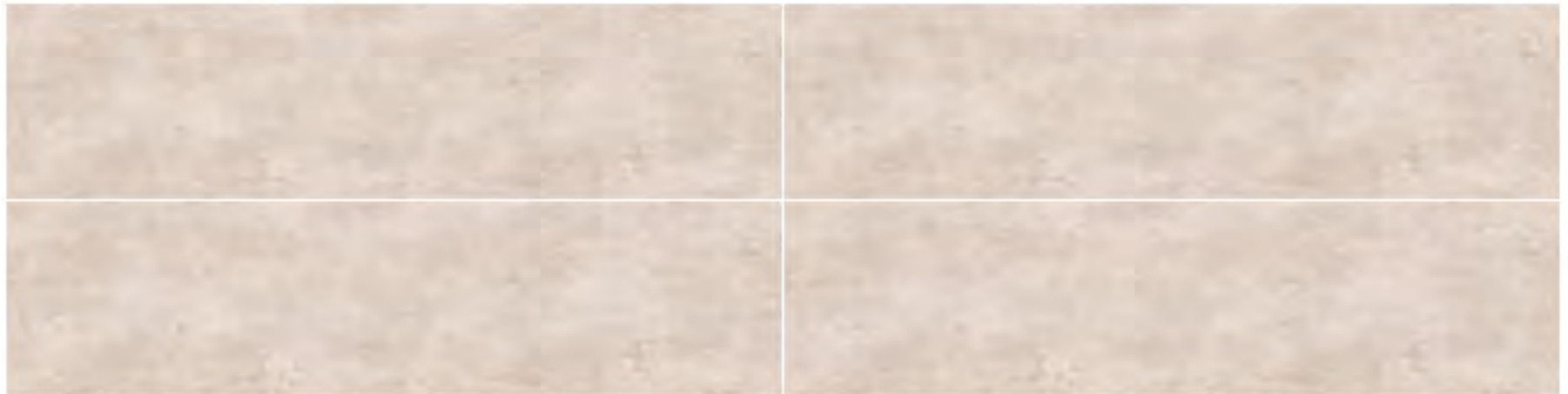


# SKYLINE LEEDS



SUPERMATTE

## AVAILABLE FACES

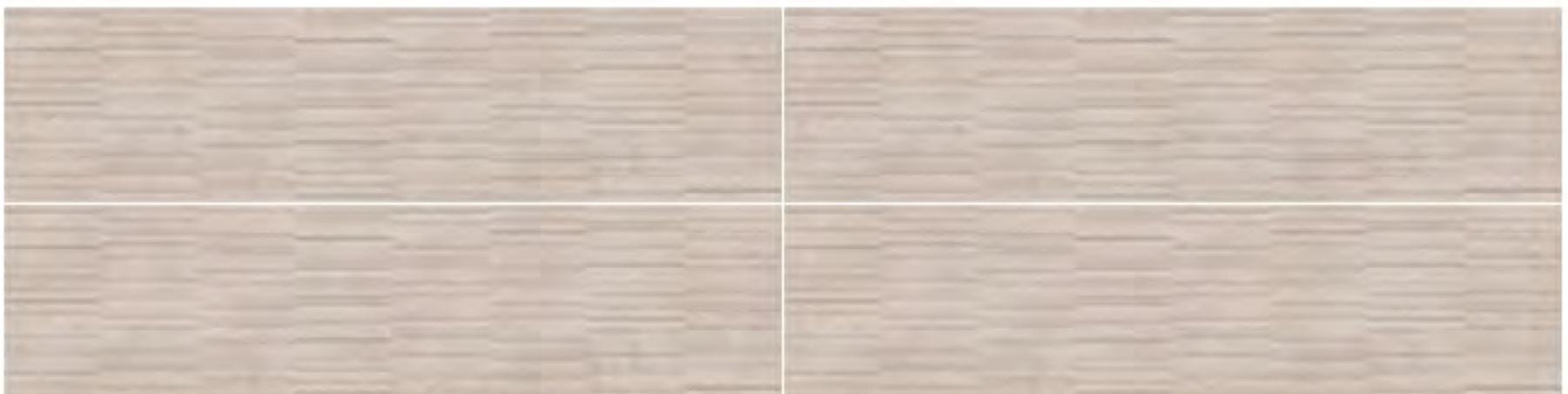


SKYLINE LEEDS SUPERMATTE 30X120 BROWN DARK

# STRIPE LEEDS



## AVAILABLE FACES



STRIPE LEEDS PUNCH 30X120 DARK



# SKYLINE OXFORD



SUPERMATTE

## AVAILABLE FACES



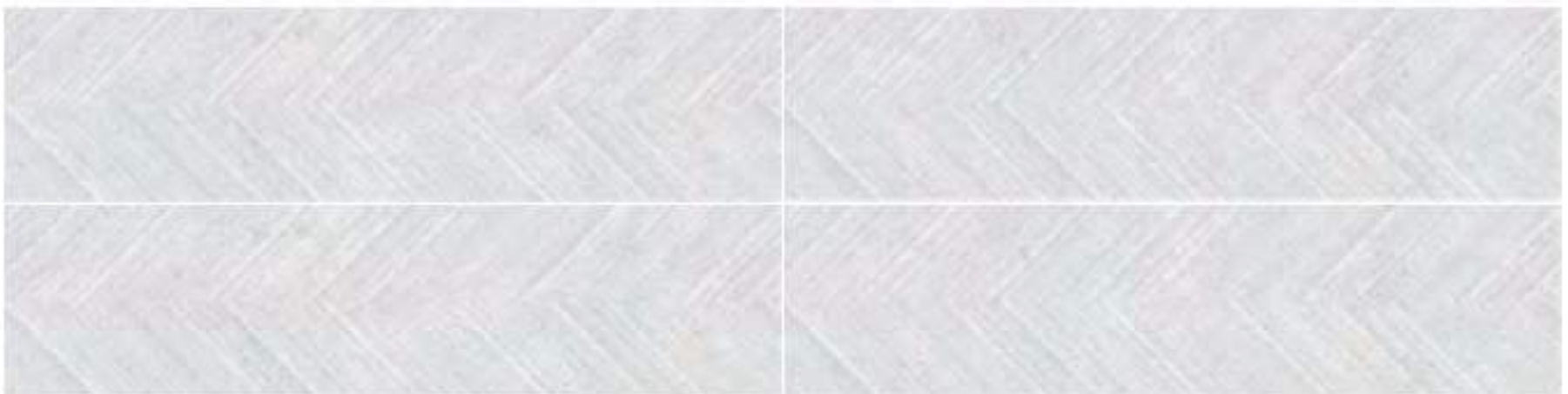
SKYLINE OXFORD SUPERMATTE 30X120 GREY LIGHT

# DECORO OXFORD



SUPERMATTE

## AVAILABLE FACES



DECORO OXFORD SUPERMATTE 30X120 GREY LIGHT





# SKYLINE BRISTOL

SURFACE



SUPERMATTE

## AVAILABLE FACES



SKYLINE BRISTOL SUPERMATTE 30X120 BEIGE LIGHT

# STRIPE BRISTOL

SURFACE



## AVAILABLE FACES



STRIPE BRISTOL 30X120 DARK

# SKYLINE BRISTOL

SURFACE



SUPERMATTE

## AVAILABLE FACES



SKYLINE BRISTOL SUPERMATTE 30X120 BEIGE LIGHT



# SKYLINE BLISS

SURFACE



SUPERMATTE

## AVAILABLE FACES



SKYLINE BLISS SUPERMATTE 30X120 IVORY LIGHT

# DECORO BLISS

SURFACE



## AVAILABLE FACES



DECORO BLISS SUPERMATTE LUSTER 30X120 MIX DARK

# SKYLINE BLISS

SURFACE



SUPERMATTE

## AVAILABLE FACES



SKYLINE BLISS SUPERMATTE 30X120 BEIGE DARK



## SKYLINE PRAGUE

SURFACE



SUPERMATTE



### AVAILABLE FACES



SKYLINE PRAGUE SUPERMATTE 30X120 BEIGE LIGHT

## DECORO PRAGUE

TEXTURE

SURFACE



SUPERMATTE



### AVAILABLE FACES



DECORO PRAGUE SUPERMATTE LUSTER 30X120 MIX DARK

## SKYLINE PRAGUE

SURFACE



SUPERMATTE



### AVAILABLE FACES



SKYLINE PRAGUE SUPERMATTE 30X120 DARK GREY



## SKYLINE OSLO

SURFACE



SUPERMATTE



### AVAILABLE FACES



SKYLINE OSLO SUPERMATTE 30X120 GREY LIGHT

## DECORO OSLO

TEXTURE

SURFACE



LUSTER



SUPERMATTE



### AVAILABLE FACES



DECORO OSLO SUPERMATTE LUSTER 30X120 MIX DARK

## SKYLINE OSLO

SURFACE



SUPERMATTE



### AVAILABLE FACES



SKYLINE OSLO SUPERMATTE 30X120 GREY DARK





## SKYLINE TASHKENT

SURFACE



SUPERMATTE



### AVAILABLE FACES



SKYLINE TASHKENT SUPERMATTE 30X120 BEIGE LIGHT

## DECORO TASHKENT

TEXTURE

SURFACE



LUSTER

SUPERMATTE



### AVAILABLE FACES



DECORO TASHKENT SUPERMATTE LUSTER 30X120 MIX DARK

## SKYLINE TASHKENT

SURFACE



SUPERMATTE



### AVAILABLE FACES



SKYLINE TASHKENT SUPERMATTE 30X120 GREY DARK



## SKYLINE WARSAW

SURFACE



SUPERMATTE



### AVAILABLE FACES



SKYLINE WARSA SUPERMATTE 30X120 GREY LIGHT

## DECORO WARSAW

TEXTURE

SURFACE



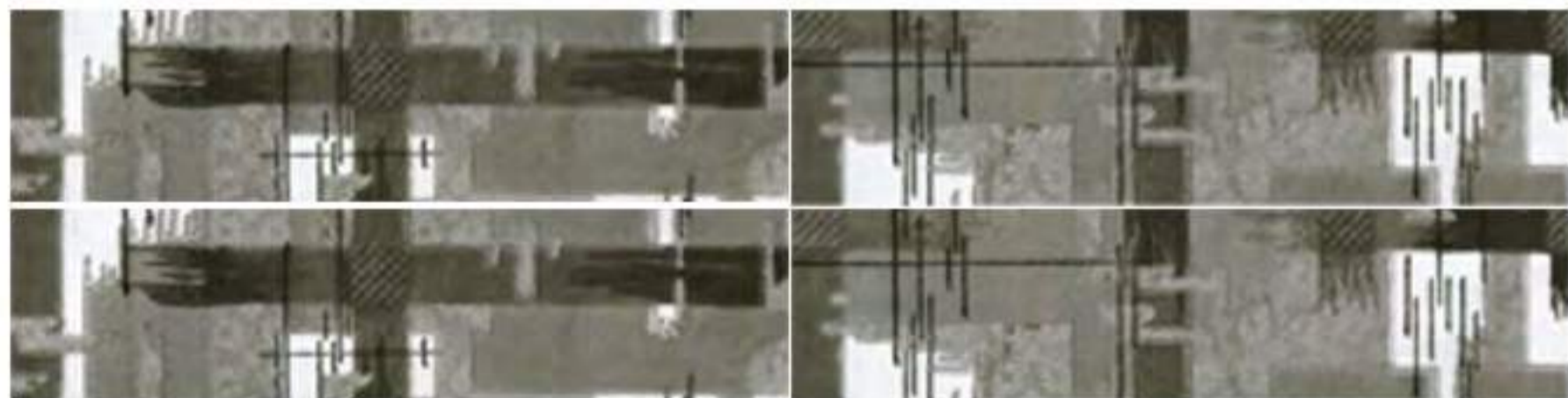
LUSTER



SUPERMATTE



### AVAILABLE FACES



DECORO WARSAW SUPERMATTE LUSTER 30X120 MIX DARK

## SKYLINE WARSAW

SURFACE



SUPERMATTE



### AVAILABLE FACES



SKYLINE WARSA SUPERMATTE 30X120 GREY DARK



# SKYLINE GLASGOW

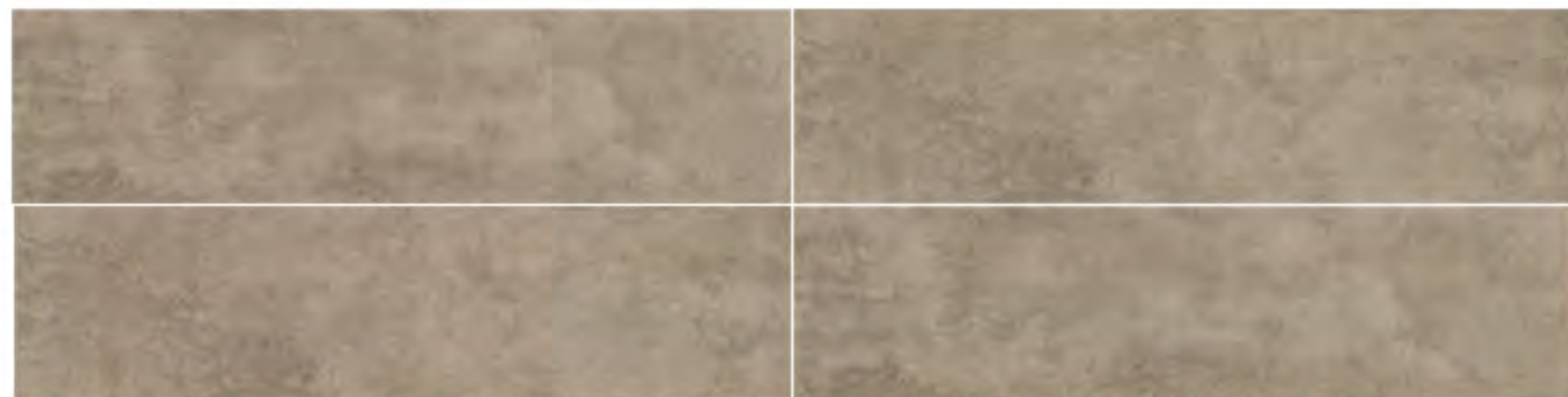
SURFACE



SUPERMATTE



## AVAILABLE FACES



SKYLINE GLASGOW SUPERMATTE 30X120 BROWN DARK



# MADERA OAKWOOD



TEXTURE



LUSTRE

SURFACE



SUPERMATTE



ROCKEREFFECT

## AVAILABLE FACES



MADERA OAKWOOD SUPERMATTE ROCKER LUSTER 300X1200  
BEIGE DARK





# MADERA TEAKWOOD



TEXTURE



LUSTRE

SURFACE



SUPERMATTE



ROCKEREFFECT

## AVAILABLE FACES



MADERA TEAKWOOD SUPERMATTE ROCKER LUSTER 300X1200  
BROWN DARK



# MADERA HAZEL



TEXTURE



LUSTRE

SURFACE



SUPERMATTE



ROCKEREFFECT

## AVAILABLE FACES



MADERA HAZEL SUPERMATTE ROCKER LUSTER 300X1200  
BEIGE LIGHT



# MADERA IPSWICH

SURFACE



SUPERMATTE



## AVAILABLE FACES



MADERA IPSWICH SUPERMATTE 60X120 BROWN LIGHT



# MADERA HACKBERRY

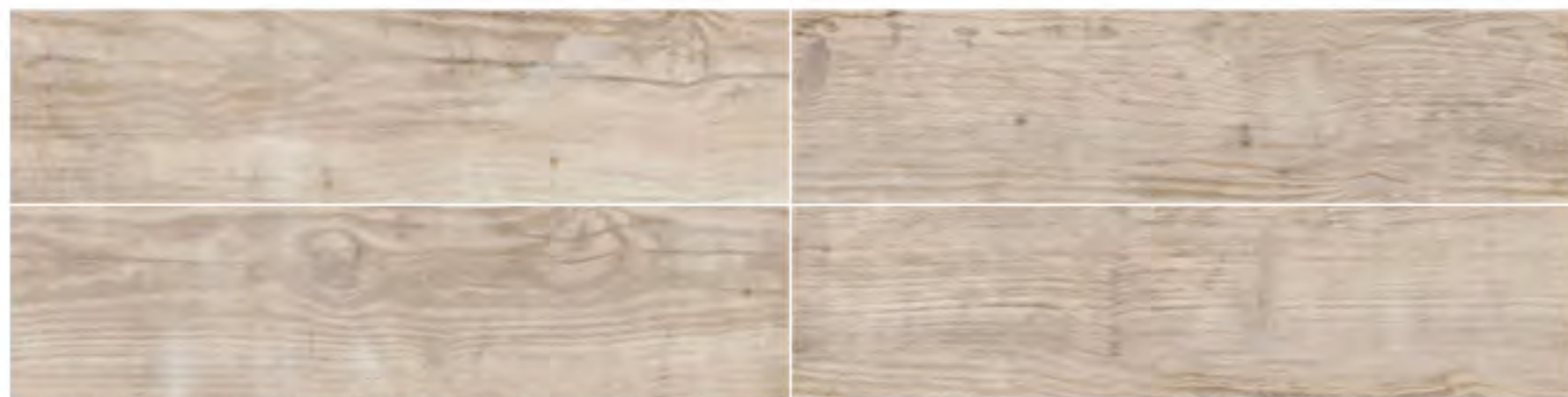
SURFACE



SUPERMATTE



## AVAILABLE FACES



MADERA HACKBERRY SUPERMATTE 30X120 BROWN LIGHT





# MADERA NUTWOOD

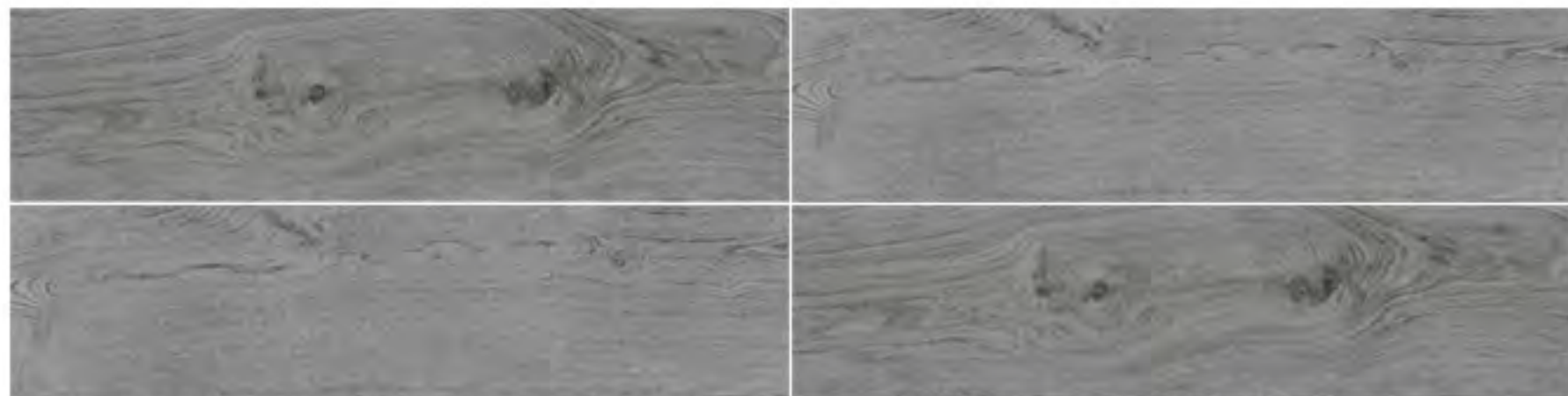
SURFACE



SUPERMATTE



## AVAILABLE FACES



MADERA NUTWOOD SUPERMATTE 30X120 GREY DARK



# MADERA NUTWOOD

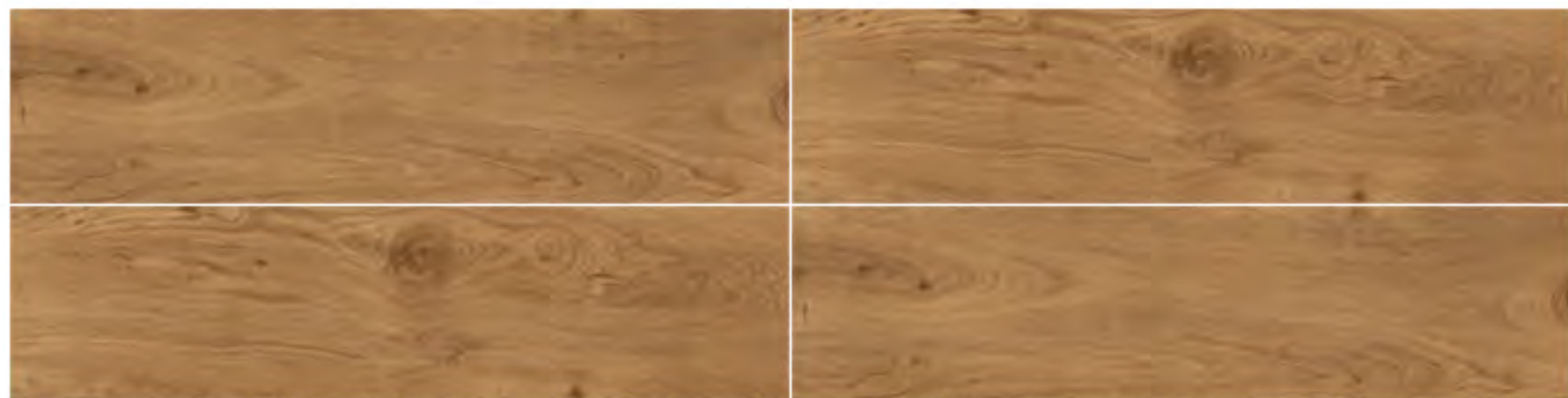
SURFACE



SUPERMATTE



## AVAILABLE FACES



MADERA NUTWOOD SUPERMATTE 30X120 BROWN DARK

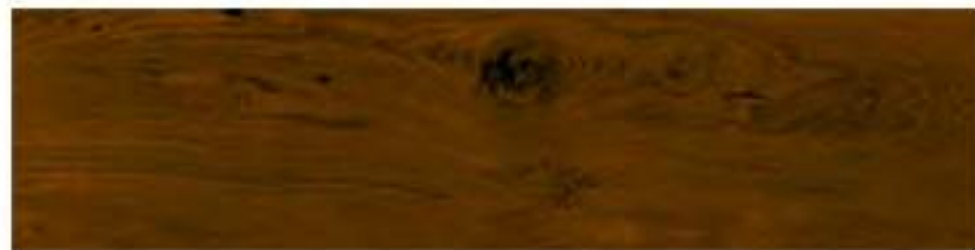


# MADERA SCOTSPINE

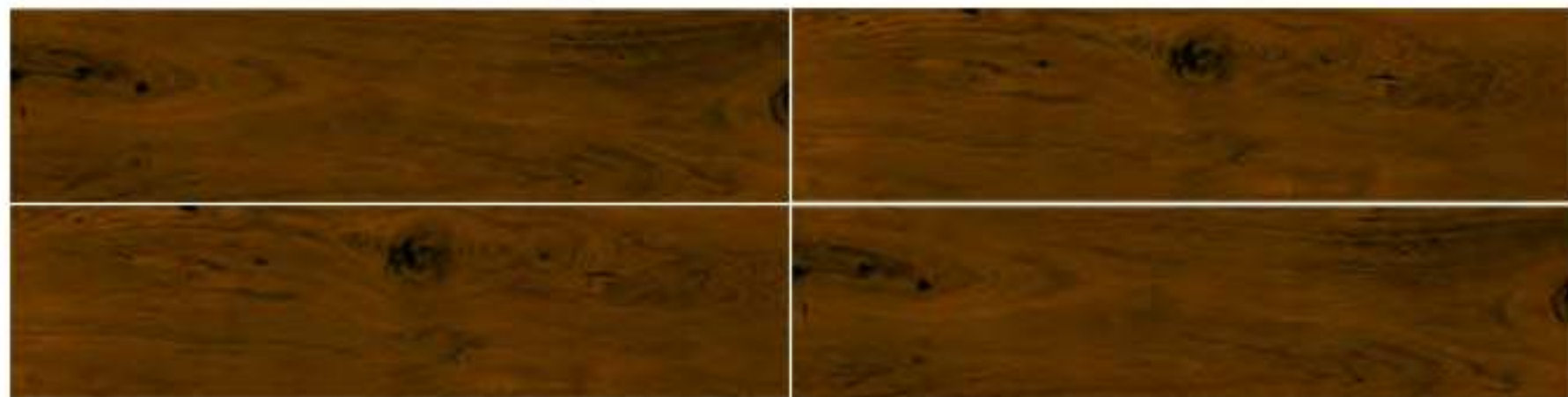
SURFACE



SUPERMATTE



## AVAILABLE FACES



MADERA SCOTSPINE SUPERMATTE 30X120 COCOA DARK



# MADERA CITRON

SURFACE



SUPERMATTE



## AVAILABLE FACES



MADERA CITRON SUPERMATTE 30X120 BROWN LIGHT





# MADERA CITRON

SURFACE



SUPERMATTE



## AVAILABLE FACES



MADERA CITRON SUPERMATTE 30X120 GREY LIGHT



# MADERA CITRON

SURFACE



SUPERMATTE



## AVAILABLE FACES



MADERA CITRON SUPERMATTE 30X120 BROWN DARK



# PEITRA CREEK



SURFACE



SUPERMATTE



ROCKER

## AVAILABLE FACES



PEITRA CREEK SUPERMATTE ROCKER 60X120 GREY LIGHT



# PIETRA BIANCO



SURFACE

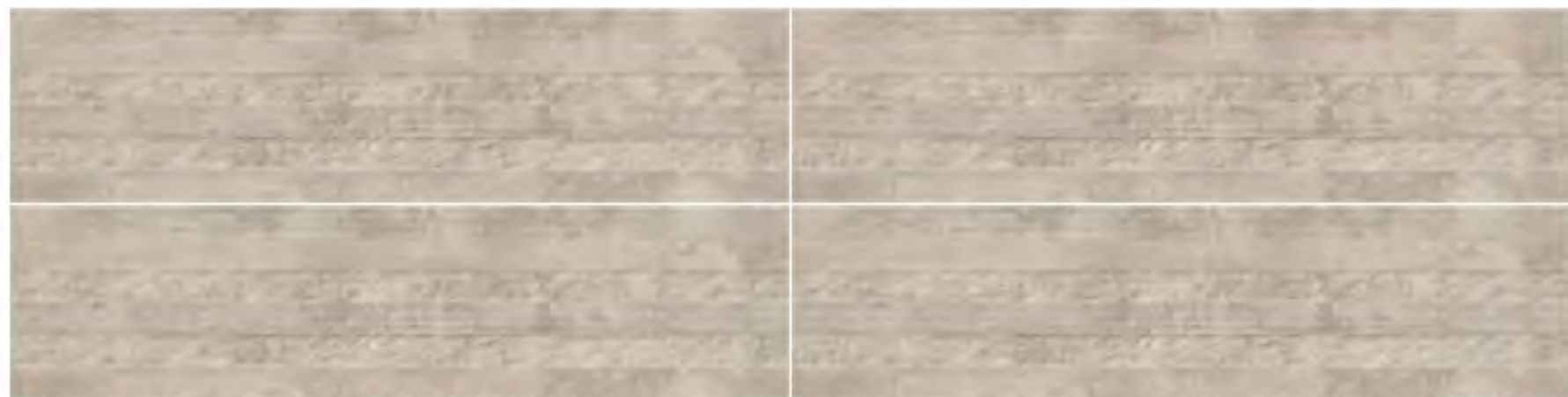


SUPERMATTE



ROCKER

## AVAILABLE FACES



PIETRA BIANCO SUPERMATTE ROCKER 60X120 BROWN DARK





# SLATE TAN

SURFACE



## AVAILABLE FACES



SLATE TAN PUNCH 30X120 LIGHT

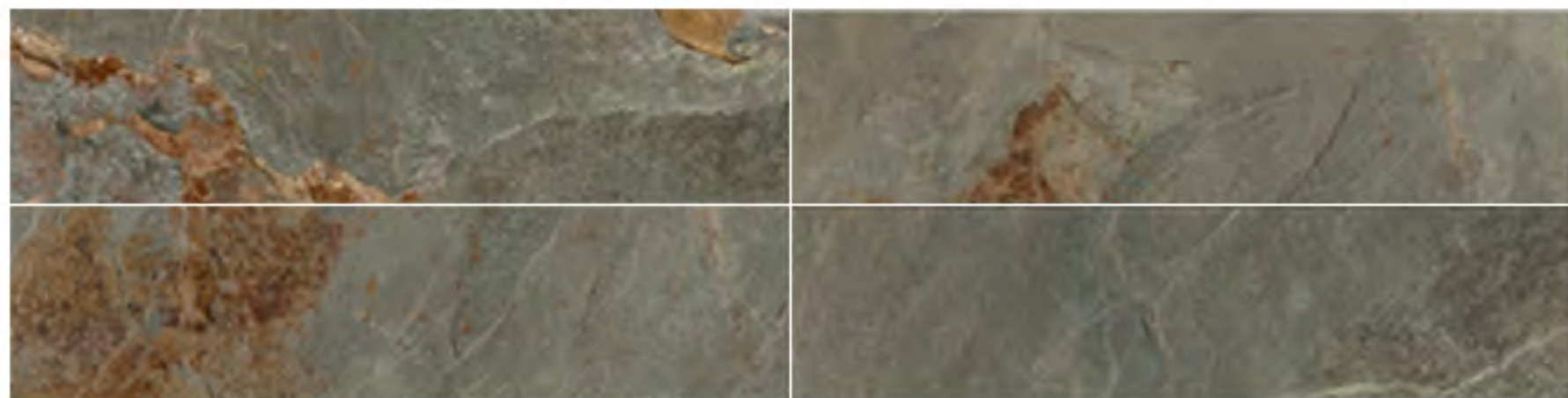


# SLATE FOSSIL

SURFACE



## AVAILABLE FACES



SLATE FOSSIL PUNCH 30X120 DARK



# SLATE GRIEGE

SURFACE



## AVAILABLE FACES



SLATE GRIEGE PUNCH 30X120 DARK

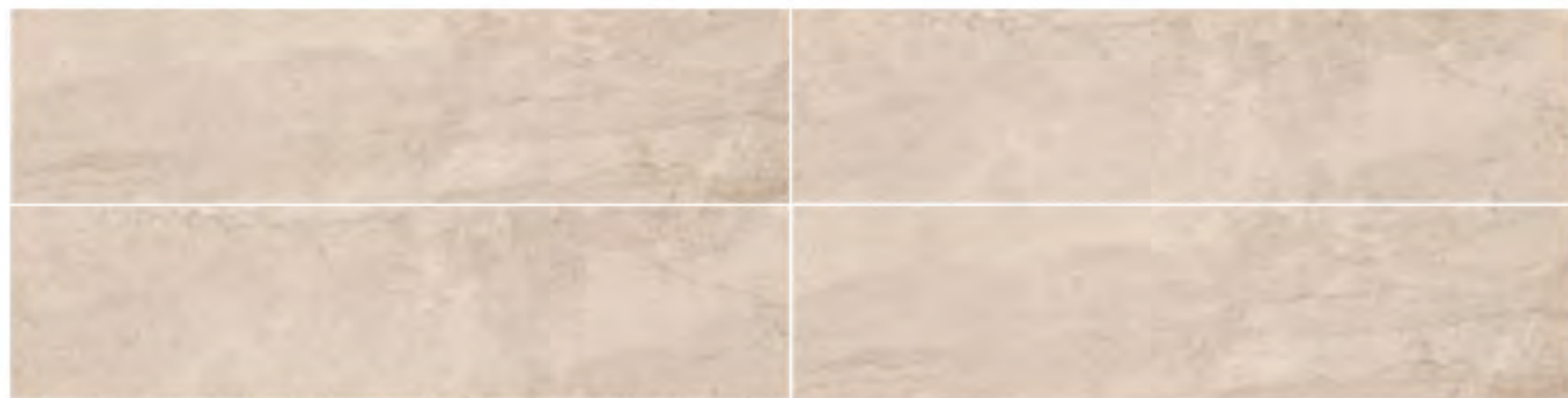


# SLATE CAMEL

SURFACE



## AVAILABLE FACES



SLATE CAMEL PUNCH 30X120 LIGHT





# SLATE SEPIA

SURFACE



## AVAILABLE FACES



SLATE SEPIA PUNCH 30X120 LIGHT

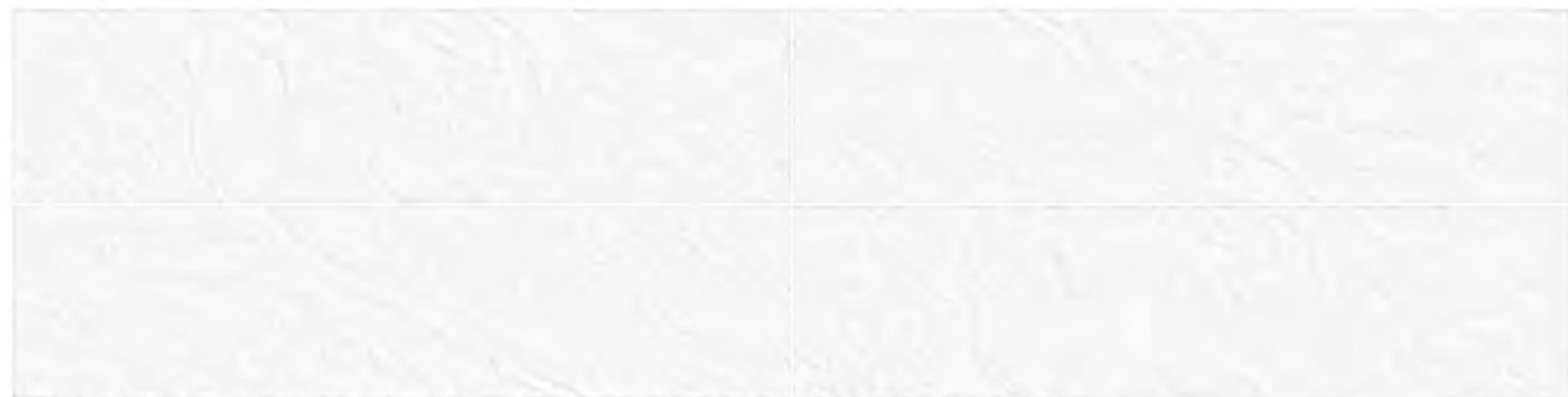


# SLATE BIANCO

SURFACE



## AVAILABLE FACES



SLATE BIANCO PUNCH 30X120 WHITE LIGHT

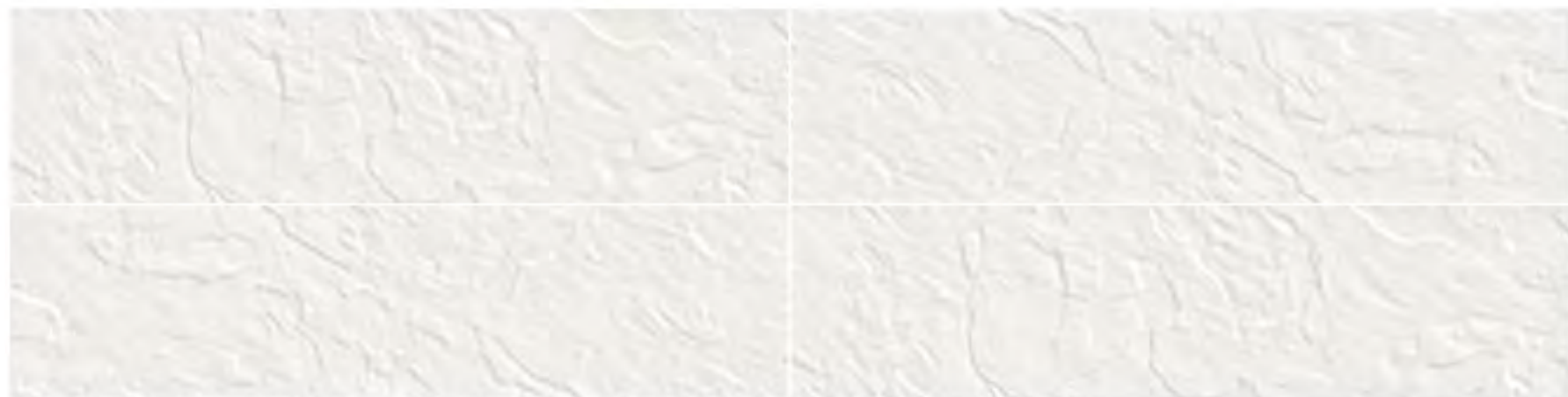


# SLATE PIZARRA

SURFACE



## AVAILABLE FACES



SLATE PIZARRA PUNCH 30X120 IVORY LIGHT



SUPERMATTE

MOST DEMANDING PERFORMANCE SPECIFICATIONS,  
ZERO GLOSSY FINISH PROVIDING YOU WITH SUPER-MATTE  
SURFACES.



LUSTRE

A SOFT GLOWING, SHINY & GLITTERY SURFACE CREATED  
BY APPLYING SPECIAL CERAMIC MATERIALS.



ROCKER EFFECT

CARVED TEXTURE ON SURFACES CREATED THROUGH  
SPECIAL CERAMIC MATERIALS AS TO GIVE NATURAL  
MARBLE OR STONE LOOK.



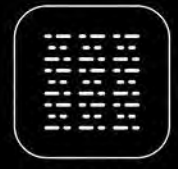
TACTILE EFFECT

MILD CARVED & SMOOTH TEXTURE ON THE SURFACES FOR  
NATURAL SENSE OF FEELING SPECIALLY ON WOOD & FABRICS.



PUNCH

ENGRAVED STRUCTURE TO DESIGN AESTHETIC SCULPTURE  
ON THE BODY SURFACE ACCORDING TO DESIGN DEMAND.



DURA GRIP

NON SLIPPERY OR NON-SKID SURFACE.



SUPERSHINE

MODERN ENVIRONMENTAL FRIENDLY POLISHING METHOD ENSURING SCRATCH FREE AND ANTIBACTERIAL FINISH.



BODY PLUS

HOMOGENEOUS TILES, ALSO CALLED FULL BODY TILES OR THROUGH-BODY TILES, IS A TYPE OF SPECIAL UNGLAZED TILES WHOSE SURFACE COLOR IS THE SAME AS THE ENTIRE TILE.



LAPPATO

SEMI GLOSSY APPEARANCE ON MATTE SURFACE BY APPLYING BUFFING PROCESS.



DIAMOND SHINE

SUPERLATIVE DEGREE OF SUPERSHINE PROCESSED SURFACES.



CRISTAL EFFECT

EMBOSED TRANSPARENT OR TRANSLUCENT SURFACES IN DIFFERENT SHAPES SPREAD OVER SURFACE IN DROPLETS OR OTHER AESTHETIC FORMS.



VELVET MATTE

SURFACE WITH UNIQUE SOFT & SILKY TOUCH.





**Sustainable Management System Inc.**  
**Certificate of Registration**

*This is to certify that, the*  
**Management Systems of**  
**Orient Material Private Limited**

Plot # 354, FIEDMC Industrial Area  
Near M3 - Sahianwala Interchange, Faisalabad, Pakistan  
*has been assessed and registered against the provision of*

**ISO 9001:2015**  
**Quality Management Systems**  
*for the following scope*

**Manufacturer, Supplier & Exporter**  
**of Porcelain Floor Tiles**

Initial Issue Date : 30-Mar-23  
Current Issue Date : 30-Mar-23  
Valid Till : 29-Mar-24  
1st Surveillance Due Date : 29-Feb-24  
2nd Surveillance Due Date : 28-Feb-25

Registration Number : SMS-2022294  
Certificate Number : SMS-MS-22394  
EA Code : 28  
Exclusion : 8.3  
Issue No : 01

Approved By:

A handwritten signature in black ink, appearing to be 'mm' followed by a stylized flourish.

President & CEO



This is an accredited certificate authorized for issue by Accreditation Service for Certifying Bodies LLC who has assessed Sustainable Management System Inc. against defined criteria and in cognizance of ISO 17021:2015 'Conformity Assessment - Requirements for bodies providing audit and certification of management systems. This certificate is only valid when confirmed by the register listed in the International Register of Quality Assessed Organizations and Sustainable Management System Inc. The validity of this certificate can be checked at [www.irqao.com](http://www.irqao.com) and [www.smscert.com/certificate-check](http://www.smscert.com/certificate-check)

**This certificate is the property of Sustainable Management System Inc.**  
3706 Suite#6B, 69 Street, Woodside, New York 11377, USA  
E-mail: [info@smscert.com](mailto:info@smscert.com), web: [www.smscert.com](http://www.smscert.com)



**Sustainable Management System Inc.**  
**Certificate of Registration**

*This is to certify that, the*  
**Management Systems of**  
**Orient Material Private Limited**

Plot # 354, FIEDMC Industrial Area  
Near M3 - Sahianwala Interchange, Faisalabad, Pakistan  
*has been assessed and registered against the provision of*

**ISO 14001:2015**  
**Environmental Management Systems**  
*for the following scope*

**Manufacturer, Supplier & Exporter**  
**of Porcelain Floor Tiles**

Initial Issue Date : 30-Mar-23  
Current Issue Date : 30-Mar-23  
Valid Till : 29-Mar-24  
1st Surveillance Due Date : 29-Feb-24  
2nd Surveillance Due Date : 28-Feb-25

Registration Number : SMS-2022295  
Certificate Number : SMS-MSC-22395  
EA Code : 28  
Exclusion : N/A  
Issue No : 01

Approved By:

A handwritten signature in black ink, appearing to be 'mm' followed by a stylized flourish.

President & CEO



This is an accredited certificate authorized for issue by Accreditation Service for Certifying Bodies LLC who has assessed Sustainable Management System Inc. against defined criteria and in cognizance of ISO 17021:2015 'Conformity Assessment - Requirements for bodies providing audit and certification of management systems. This certificate is only valid when confirmed by the register listed in the International Register of Quality Assessed Organizations and Sustainable Management System Inc. The validity of this certificate can be checked at [www.irqao.com](http://www.irqao.com) and [www.smscert.com/certificate-check](http://www.smscert.com/certificate-check)

**This certificate is the property of Sustainable Management System Inc.**  
3706 Suite#6B, 69 Street, Woodside, New York 11377, USA  
E-mail: [info@smscert.com](mailto:info@smscert.com), web: [www.smscert.com](http://www.smscert.com)



## Foundary Service Centre (FSC)

University of Engineering and Technology Lahore-54890, Pakistan

Ph: 042 99029387 Fax: 042 99250202 Email:directorfsc@uet.edu.pk

Dated:29.11.2022

FSC/UET/Chem/11/2022/S14

Orient Group of Companies,

Multan Road Lahore.

### Subject: Water Absorption Test for Tiles

With reference to Ref No. Nil dated: 22-11-2022, result of the provided sample/s is reported below.

Sr. No.	Sample	Water Absorption
		%
1	Sample 1	0.4

Prof. Dr. Muhammad Asif Rafiq  
Director (FSC)

Note: The above results pertain to the supply samples only. As the sampling has been done by the client, therefore its authenticity lies with them. After issuance of the report, the samples will be retained for 15 days until negotiated otherwise. The non-negotiable results will not be challenged.

Foundary Service Centre, Opposite Gate no 5. near Industrial Manufacturing Department, University

# **ORIENTCERAMICA**

- 📍 **ORIENT MATERIAL (Pvt. Ltd.)**
  - ☎ UAN: 111 ORIENT (674-368)
  - ✉ Email: [info@orientceramica.com](mailto:info@orientceramica.com)
  - 📍 Head Office: Orient Group, 26km, Multan Rd, Lahore, Pakistan
  - 📍 Factory: Plot#354, M3 Industrial Estate, FIEDMC Sahianwala, Faisalabad, Pakistan
- 

